



Ag Leader Technology

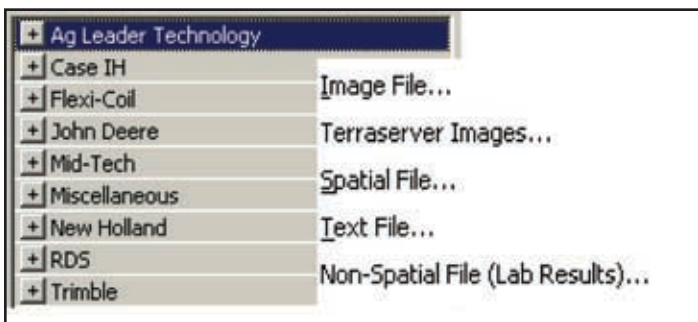
F A C T S H E E T

SMS Basic v6.0 – Precision Software Made Easy!

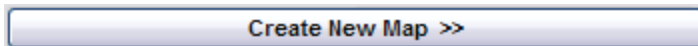
Looking for Simple?

Whether you are just getting started in precision farming or have been collecting data for years, SMS Basic has something for you. SMS Basic is known for its ease of use of the three main functions for precision agricultural software:

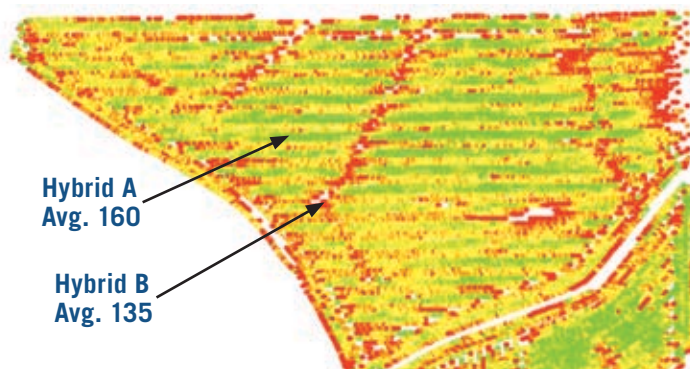
1. Reading Data. SMS Basic supports many types of precision farming formats. Files from Case®, New Holland®, John Deere®, MidTech®, Trimble® can all be processed with SMS. SMS can also support standard industry formats such as shape files, text files, and image files.



2. Creating and viewing maps is as easy as selecting



3. Printing Map and Reports. By selecting the “print” button a default map layout can easily be printed. Also, by using the report function in SMS Basic, grower, farm and field reports can easily be created to help determine total area and bushels for growers, fields and even individual regions.



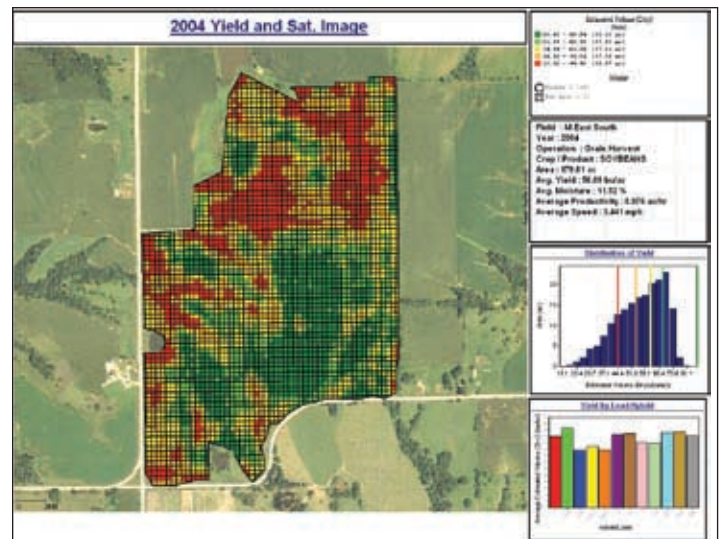
Split Load Region & Spatial Sorting in SMS Basic software will take the field borders & sort field data into the appropriate location.

SMS Batch Process feature will allow you to pick all your files and walk away as it reads them into your computer automatically.

Automatically Download Images of all your fields. With a few simple clicks you will have images downloaded for all your fields.

Write Prescriptions for planting, fertilizing, spraying or other operations. A simple wizard steps you through the process of matching ranges with the rates you desire. SMS Basic supports many different file formats.

Create Crop Plans to help forecast location of crops, chemicals, rates to apply, & target dates to apply. Later you can use the Job management tree to view actual vs. planned activities helping you see how well your plan was executed.



Generate A-B Guidance Lines for your EZ-Guide Plus and Insight products. Choose your swath width, headland type & you can create guidance patterns for your fields. Patterns then can be loading into your EZ-Guide Plus or Insight.

Split Planter Tool will split your passes into each variety. Once you harvest, you can put your planting map on top of your harvest map and easily make comparisons between each variety.

Dedicated support staff. SMS Basic software is backed by a dedicated and knowledgeable group of software specialists.

**FREE
30-Day Trial**

Free 30-Day Trial on SMS Basic



F A C T S H E E T

SMS Basic v6.0 – Precision Software Made Easy!

Key Features of SMS Basic Software

- ▶ Easy-to-use, point and click interface.
- ▶ Multi-layer viewing and query of data.
- ▶ Point, swath, grid, or contour maps and real-time layer transparency.
- ▶ Geo-referencing of image files.
- ▶ Creation of variable rate prescriptions for use in the PFAdvantage, PF3000, PF3000 Pro, Insight monitor and other application equipment.
- ▶ Import/Export of ESRI Shape, ASCII text, GeoTIF, BMP, JPEG, TIFF, JPEG 2000, Mr. Sid, PNG, WMF & other image formats.
- ▶ Customizable map printouts.
- ▶ Custom legends for crop/product and attribute combinations.
- ▶ Spatial Sorter function that uses a defined area for a field or farm and sorts GPS data that falls into these areas with the click of a button.
- ▶ Support for all modes of the Ag Leader PFAdvantage, PF3000, PF3000 Pro and Insight monitor.
- ▶ Ability to print charts – Allows the comparison of data across multiple years, products, farms, etc graphically.
- ▶ Drawing and selection tools – You can create generic datasets using drawing tools (point, polygon, line, circle, ellipse) and also make selections using the select circle, ellipse, and pass tools.
- ▶ Query Selection Tool – This selection tool allows you to define a query filter that will then select only the data that meets your selection requirements.
- ▶ Full support for imported data – Summary information, tooltips, queries, etc is available for all imported data.
- ▶ Customizable Summaries – You can modify how and what is displayed in your summaries for the management tree, maps, and printouts.
- ▶ Boundary clipping – You can freeze a field boundary and clip grid or contour data to the boundary edges of the field.
- ▶ Direct support for John Deere® harvest files, New Holland® LOG & VYG files, Case® files, Trimble® & Mid Tech® files.
- ▶ Guidance Editor creates A-B Guidance lines that can be export to EZ-Guide Plus products and Insight monitor with API.
- ▶ Crop Plan Editor generates plans that include: yield goals, products to use, rates, target dates
- ▶ Resource and Product Tracking – You can now fully define the resources and products used in your crop production cycle.
- ▶ Manual Summary Entries – Allows the entry of manual values for data, in addition to the summary information that was logged. Yield, Area, and Moisture values can be entered manually, for example.
- ▶ Batch Processing Functions – You can Add/Remove Properties, Simple Analysis, Assign Resource Tracking, and Freeze Boundaries in bulk.
- ▶ Calculated attributes – In conjunction with the Resource and Product Tracking entries you can now get calculated values for Product Used (i.e. bags of seed), Product Refills, Fuel Used, Fuel Refills, etc.

- ▶ Support for the INSIGHT multi-product prescription file format and version 3.x firmware.
- ▶ “Management list import” option allows users to import management items such as product names, vehicle names, grower names, etc.
- ▶ Added support for importing information from AgriDNA service. Import name and available descriptive info for seeds, chemicals and fertilizers.
- ▶ Support for variations in TIFF file formatting, supports TIFF images greater than 100MB and supports multi-band TIFF images.
- ▶ Trace Boundary feature that can create a very accurate field boundary from a selected dataset(s).
- ▶ Web-based registration/unlocking capability.
- ▶ PDF Print Driver that is available as a virtual printer that can be used to print any output from SMS.
- ▶ Vault Utility under the services menu allows you to delete unwanted copies of import files from your vault, potentially freeing needed hard drive space and reducing the size of your backups.
- ▶ Field Summary Report box, includes a new tool to reorder the position of multiple pages in a layout and allows for new options to the text box object.
- ▶ Enhanced Backup/Restore. Now supports a new backup extension, no limits on backup sizes, custom names and descriptions can be added for backups, etc.
- ▶ Many other new and enhanced features.

Recommended System Requirements

- ▶ Pentium III or equivalent processor
- ▶ Windows 2000/XP operating system
- ▶ 512 MB of RAM memory
- ▶ 2 GB of free hard drive space
- ▶ CD-ROM or DVD-ROM drive
- ▶ 17" monitor
- ▶ 800 x 600 at 16-bit color display resolution
- ▶ 2 MB 2D/3D graphics card

SMS Basic Version 6.0

SMS Basic	\$600
Annual Maintenance Fee	\$120 (20% of List Price)

Contact Information:

Ag Leader Technology, Inc.
 2202 S. Riverside Dr, Ames IA 50010
 515-232-5363
www.agleader.com

Visit www.agleader.com/sales-smsdealers.htm
 for a SMS Dealer in your area!

